



HALTON SEND

Important Information



PARENT CARER ADVICE / SUPPORT

1 Halton Send Parent Carer's Forum



A voice to inform families with children with additional needs of the services in our local area which may be beneficial to your child.

www.haltonsendcarersforum.org.uk

2 ADDvanced Solutions



An open access offer that supports the emotional health and wellbeing of neurodivergent children and young people, their families and the professionals that work with them.

www.addvancedsolutions.co.uk

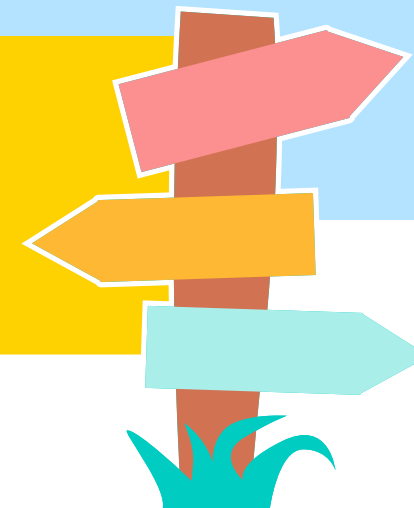
3 Halton Carer's Centre



Halton Carers' Centre is a network partner of the Carers Trust. We work to reach unpaid young & adult carers and develop services for them across the borough.

www.haltoncarers.co.uk

SIGNPOST FOR HALTON



1 Bridgewater



Bridgewater Community Healthcare NHS Foundation Trust. Here you will find information about all of Halton's Health services

www.bridgewater.nhs.uk/halton/

2 Sendiass



If you need some advice, guidance or support on any issues that are affecting you or your child then we're here to help. We provide impartial and confidential information and support.

www.sendiasshalton.co.uk/

3 Family Hubs



A one stop digital platform for Halton residents to use to find services, events, support groups and advice

www.haltonfamilyhubs.co.uk/



SUPPORTING CHILDREN'S MENTAL HEALTH

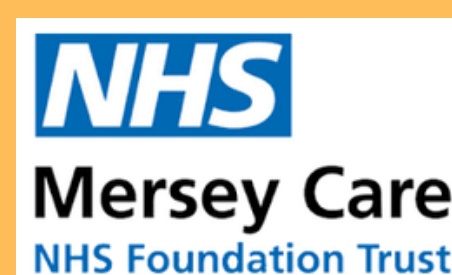
1 MHST

www.merseycare.nhs.uk



2 KOOTH

www.kooth.com



3 CAMHS

www.merseycare.nhs.uk

Our Mental Health Support Team provides direct mental health support to 45 schools in Halton. We promote the early detection and prevention of mental health problems, strengthen links with mental health services, providing direct, ongoing support around mental health and wellbeing across the whole school.

Kooth is a free digital safe and anonymous platform for support for young people. They have wellbeing activities, journals, discussion boards, tips and a free Chat and messenger option for young people to talk to someone.

Headz Up Halton drop-in hub
An informal drop-in café where young people up to 18 years, parents and carers can drop by to speak with a mental health professional for assessment, advice and signposting to local services.
Tues- Brookvale / Thursday Warrington Rd